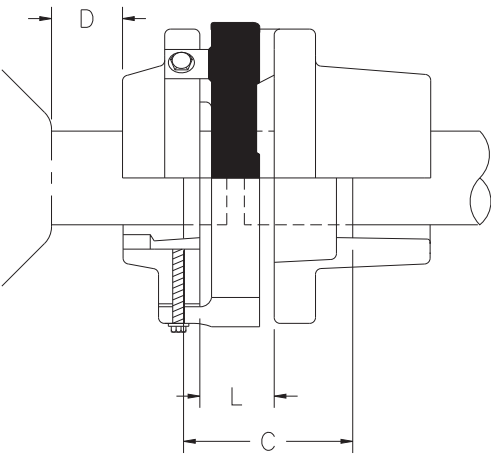
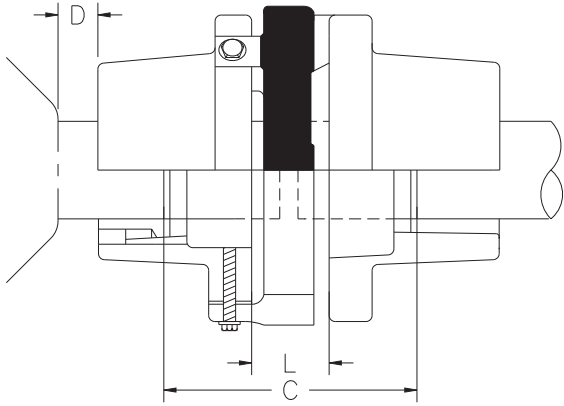


Spacer Coupling for Taper-Lock* Bushing

1. See table on page 80 for dimensions not listed.
2. Maximum bore is the maximum obtained when the bushing is supplied with a shallow keyway. Flat keys are then supplied with the bushing.

3. Space is required to remove bushing using shortened hex key cut to maximum usable length for sizes 30 to 80. Sizes 90 and 100 use open end wrench.

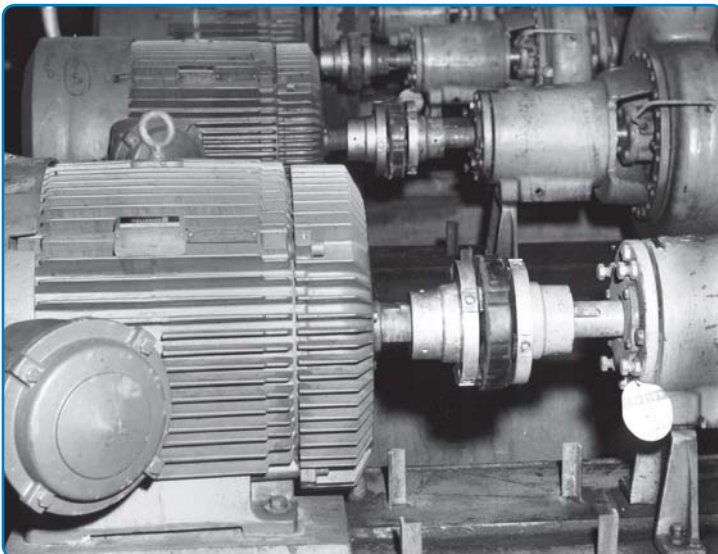


Double Spacer Coupling for TAPER-LOCK* Bushings

Coupling Size	TAPER-LOCK* Bushing			Hub Sep. L	Shaft Sep. C		D
	Number	Bore Min. (in.)	Bore Max. (in.)		Min. (in.)	Max. (in.)	
30	1108	1/2	1 1/8	1 1/2	1/8	6 5/8	3/4
40	1215	1/2	1 1/4	1 5/8	1/8	6 1/2	1 1/16
50	1615	1/2	1 5/8	2 1/8	1/8	6	1 1/1
60	2012	1/2	2	2 1/8	1/8	6 1/2	1 3/8
70	2517	1/2	2 1/2	2 3/8	1/8	6 7/8	1 5/8
80	3020	15/16	3	3	1/8	8 3/8	2 1/16
90	3535	1 3/16	3 1/2	4 1/8	1/8	7	1 3/4
100	3535	1 3/16	3 1/2	4 1/8	1/8	7	2

Single Spacer Coupling for TAPER-LOCK* Bushings

Coupling Size	Shaft Sep. C		D
	Min. (in.)	Max. (in.)	
30	1/8	4 1/2	3/4
40	1/8	4 13/16	1 1/16
50	1/8	4 9/16	1 1/16
60	1/8	5 1/16	1 3/8
70	1/8	5	1 5/8
80	1/8	6 3/8	2 1/16
90	1/8	5 9/16	1 3/4
100	1/8	5 9/16	2



Hubs Bored for TAPER-LOCK* Bushings

Coupling Size	S Hub Part No.	E Hub Part No.	Element W/ Fasteners	
			Part No.	Wt. (lbs.)
30	30 SHUBTLX1108	30 EHUBTLX1108	30 ELEMENT	1
40	40 SHUBTLX1215	40 EHUBTLX1215	40 ELEMENT	1
50	50 SHUBTLX1615	50 EHUBTLX1615	50 ELEMENT	2
60	60 SHUBTLX2012	60 EHUBTLX2012	60 ELEMENT	3
70	70 SHUBTLX2517	70 EHUBTLX2517	70 ELEMENT	5
80	80 SHUBTLX3020	80 EHUBTLX3020	80 ELEMENT	9
90	90 SHUBTLX3535	90 EHUBTLX3535	90 ELEMENT	16
100	100 SHUBTLX3535	100 EHUBTLX3535	100 ELEMENT	18

* Taper-Lock is believed to be the trademark and/or trade name of Reliance Electric Company, and is not owned or controlled by Regal Power Transmission Solutions.